



Mouse anti Alkaline Phosphatase (AP) Monoclonal Antibody

Alternative Name(s): alkaline phosphatase, placental

Order Information

- **Description:** Alkaline Phosphatase (AP)
- **Catalogue:** 500-7044
- **Lot:** See label
- **Size:** 100ug/200ul
- **Host:** Mouse
- **Clone:** V17.1
- **Application:** IHC(P), ELISA
- **Reactivity:** Hu

ANTIGEN PREPARATION

Alkaline phosphatase derived from bovine intestine.

BACKGROUND

Alkaline phosphatase (ALP) removes phosphate groups from the 5' end of DNA and RNA, and from proteins, at high pH. Most mammals have 4 different isozymes: placental, placental like, intestinal and non tissue specific (found in liver, kidney and bone). Tissues with particularly high concentrations of ALP include the liver, bile ducts, placenta, and bone. Damaged or diseased tissue releases enzymes into the blood, so serum ALP measurements can be abnormal in many conditions, including bone disease and liver disease. Alkaline phosphatases catalyze the hydrolysis reaction via a phosphoserine intermediate to produce inorganic phosphate and the corresponding alcohol, optimally at high pH. Alkaline phosphatase exists as a dimer, each monomer binding 2 zinc atoms and one magnesium atom, which are essential for enzymatic activity.

PURIFICATION

The mouse IgG is purified by Protein A-Affinity Chromatography according to Isotyping

FORMULATION

This affinity purified antibody is supplied in sterile Phosphatebuffered saline (pH7.2) containing antibody stabilizer

SPECIFICITY

This antibody recognizes human alkaline phosphatase.

STORAGE

The antibodies are stable for 24 months from date of receipt when stored at -20oC to -70oC. The antibodies can be stored at 2oC-8oC for three month without detectable loss of activity. Avoid repeated freezing-thawing cycles.

APPLICATIONS/SUGGESTED WORKING DILUTIONS*

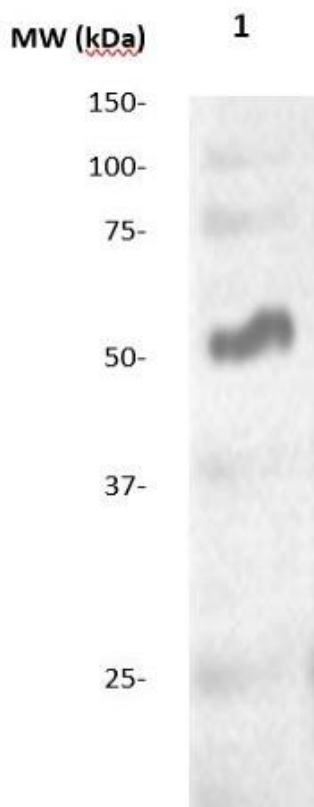
- Western Blot: 0.1-1 µg/ml
- ELISA: 0.01-0.1 µg/ml
- Immunoprecipitation: 2-5 µg/ml
- IHC: 2-10 µg/ml
- Flow cytometry: Not tested
- Molecular Weight: 50.0
- Positive Control: Kidney Tissue
- Cellular Location: Cell Membrane

*Optimal dilutions should be determined by researchers for the specific applications.

FOR RESEARCH USE ONLY.

AbboMax, Inc 2528 Qume Drive, Suite 8, San Jose, California 95131, USA
1 408-573-1898 (Tel). 1 408-573-1858 (Fax). www.abbomax.com info@abbomax.com

DATA ATTACHMENTS



Western Blot: The bovine alkaline phosphatase was resolved onto 10% SDS-PAGE, transferred onto NC membrane, and followed by an immunoblotting with Mouse anti Alkaline phosphatase (Cat#500-7044) antibody at 1:500. An immunoreactive band is observed around ~50 kDa.

REFERENCES

FOR RESEARCH USE ONLY.

AbboMax, Inc 2528 Qume Drive, Suite 8, San Jose, California 95131, USA
1 408-573-1898 (Tel). 1 408-573-1858 (Fax). www.abbomax.com info@abbomax.com